

Bulletin #46
June 1931.

Tealdi

The Nichols Arboretum

By PROF. AUBREY TEALDI

AN ARTICLE about the University of Michigan Peony Garden in the Nichols Arboretum at Ann Arbor appeared in the BULLETIN of September, 1929. Work on the project was begun in 1923 and it was opened to the public for the first time in 1927. The permanent support guaranteed by the University insures for the future, as in the past, the finest care and maintenance.

It will be remembered that the peony plants were generously donated by members of the Peony Society, both at the beginning of the development and after the garden had been opened to visitors.

Space is provided in the garden for about 400 varieties and there are at present 258 varieties planted. A few of these are still small but the great majority are fine, full-sized plants, as may be seen in the illustration showing bed No. 14 of the Identification Chart.

MORE VARIETIES NEEDED

While the result of the planting has been very successful and the design of the garden in its ideal setting adds very much to the effect of the peony blooms, the expert looks in vain in the collection for a number of varieties which are missing, especially among the newer introductions.

The continued support of the members of the American Peony Society will be deeply appreciated. A list of the varieties that it is hoped may be added to the collection this autumn is given below. The addition of these varieties would increase the interest of the planting as a representative collection and would greatly enhance the value of the garden to the peony-loving public, which in ever-increasing numbers visits the garden during the peony season.

The director of the Nichols Arboretum will be very grateful if the generous friends who will be willing to make contributions of roots will notify him as soon as possible, stating which varieties they would contribute. This will help to avoid unnecessary duplication.

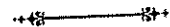
LIST OF PEONY DESIDERATA

Alice Harding.	Coronation.	Flamboyant (Kame-no-keg-
Alma.	Cathedral.	oromo).
Altar Candles.	Daphne.	Gypsy (Hollis).
Ama-no-sode.	Denise.	Inspecteur Lavergne.
Ball O' Cotton.	Elisa.	Isami Gidui (Isami Jishi).
Charlot.	Exquisite (single).	John M. Good.
Clemenceau.	Florence Macbeth.	Kelway's Gorgeous.

Kukeni Jishi.
King of England.
Lillian Gumm.
Madelon.
Mabel L. Franklin.
Matilda Lewis.
Margaret Atwood.
Mme. Edouard Doriat.

Minnie Shaylor.
Mischief.
Nannette.
Nippon Beauty (Auten).
Nymphe (Dessert).
Pride of Langport.
Princess Duleep Singh.
Rashoomon.

Rita.
Silvia Saunders.
Snow Wheel.
Some-Ganoko.
Toro-no-maki.
Torpilleur.
Vera.
W. F. Christman.



Pennsylvania State Show

A DEPARTURE from the usual custom was made by The Pennsylvania Horticultural Society this year in producing its annual spring show in conjunction with another organization—the Trevoise Horticultural Society. The two organizations, the largest horticultural societies in the State, with the co-operation of the Garden Club Federation of Pennsylvania, held a very successful exhibition at Trevoise, Pa., on June 2 and 3, with an attendance of over 2,000. The Community House in which the show was staged is well adapted to flower exhibitions and an abundance of daylight illuminated the two halls where the exhibits were displayed, so that visitors up until eight o'clock in the evening could see the flowers without artificial light.

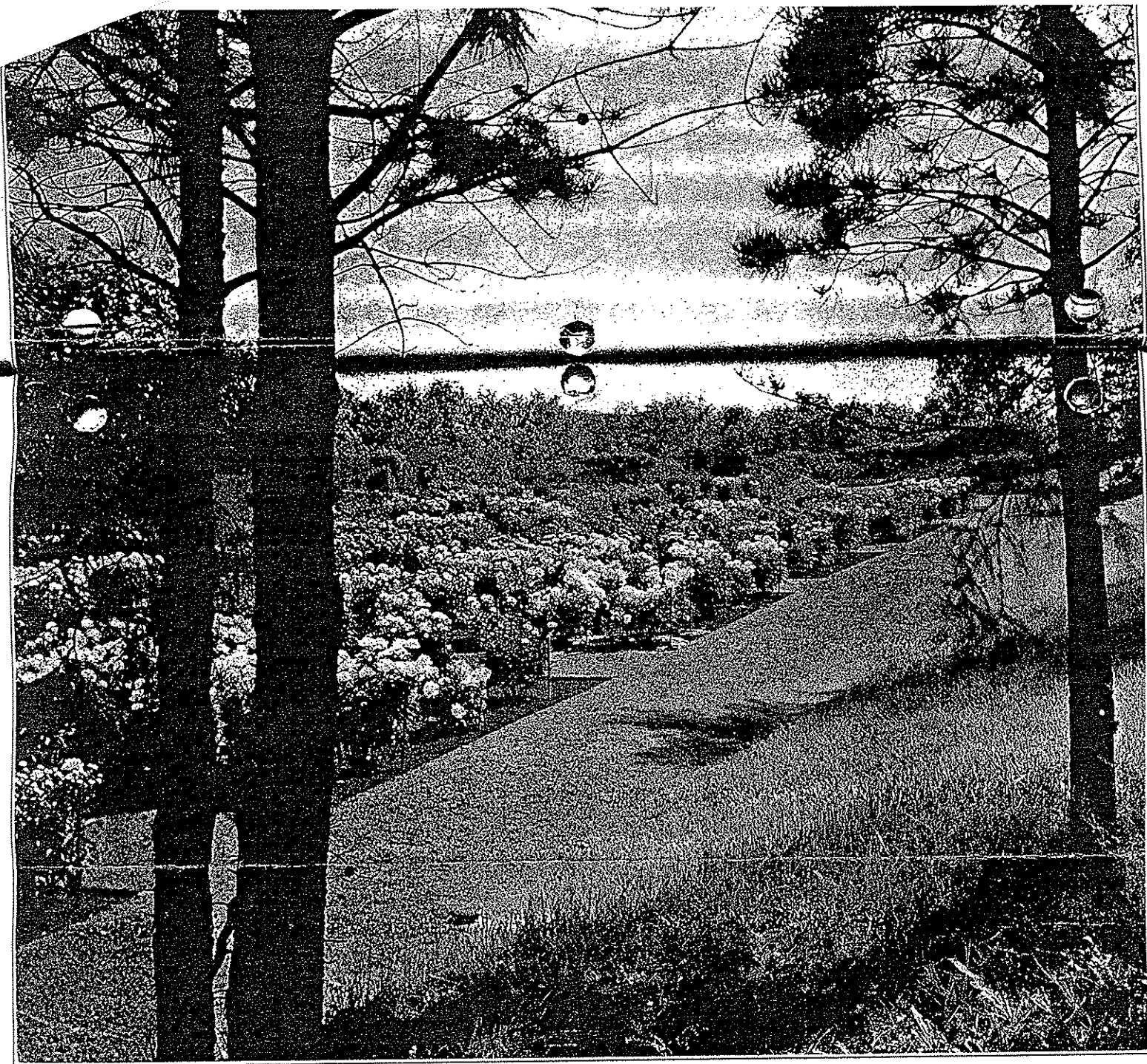
500 ENTRIES IN 80 CLASSES

The early season this year brought many flowers into bloom at one time which usually do not appear together, and there was a pleasing variety to gratify every taste. There were 500 entries in the 80 classes scheduled. Perennials, including biennials, roses, and artistic arrangements of various kinds were displayed on the upper floor, where at one end of the hall, a stage beautifully decorated by the Henry F. Michell Company, added to the effectiveness of the whole. The stage display, consisting of peonies and roses banked against a background of shrubs, was not entered in competition but was generously contributed by the Michell Company and was an attractive feature of the show.

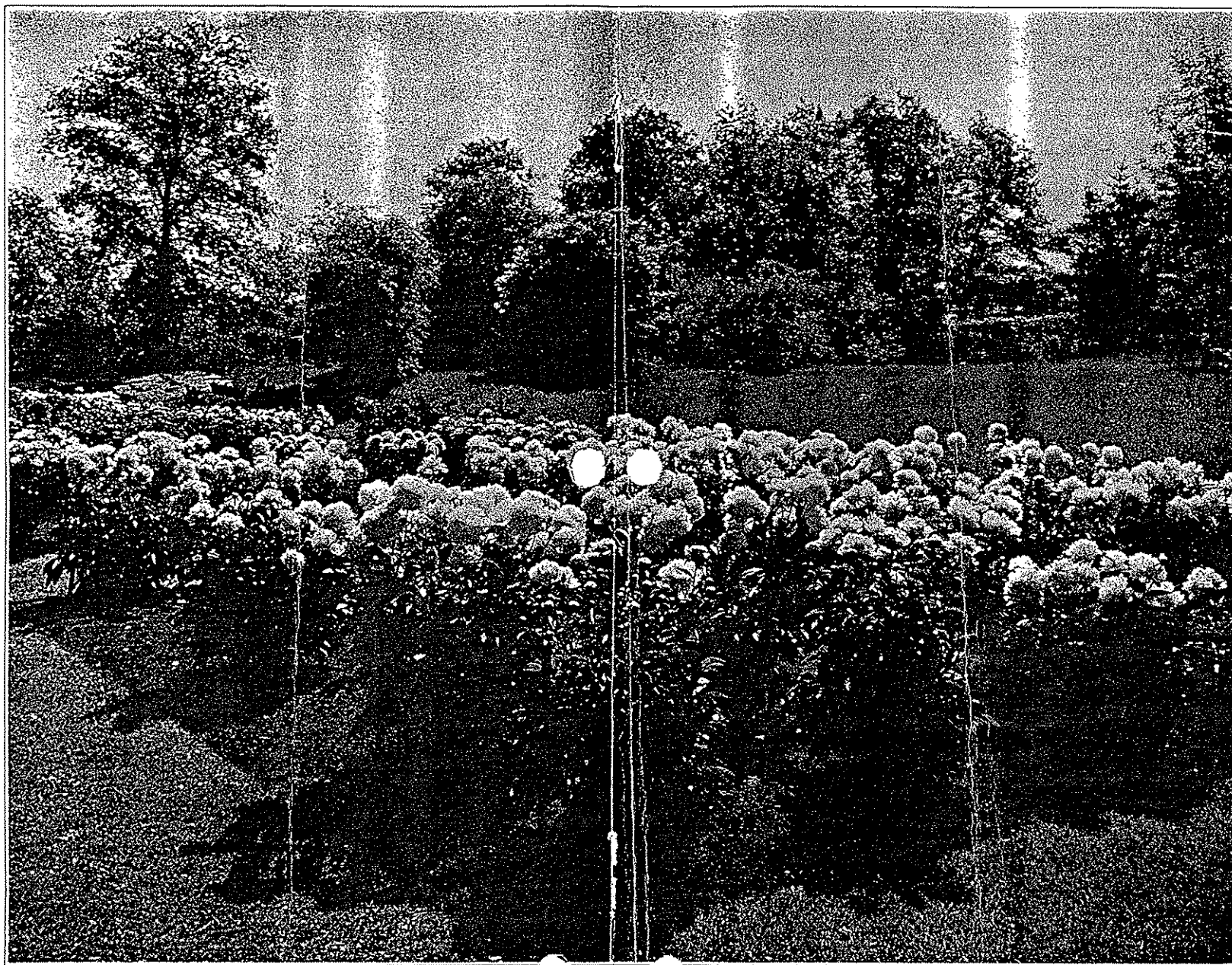
On the lower floor, were iris, peonies and rock plants, and a special section for professional gardeners and superintendents of estates, and one for distinctive plants, new seedlings or new importations.

ROSE EXHIBITS ATTRACTIVE

The rose exhibits were very lovely, the outdoor roses rivaling their hothouse sisters which were excluded from this exhibition. The Robert C. Wright Rose Medal, which was established in 1926 in honor of Mr.



A View of the Peony Garden at Nichols Arboretum, Looking East



Bed No. 14 at the Peony Garden of the Arnold Arboretum, University of Michigan